
Communication Disorders

Presented by: Advocates for Justice and
Education, Inc.

The Parent Training and Information Center for
the District of Columbia/DC Parent Information
Network

Updated 10/29/2010



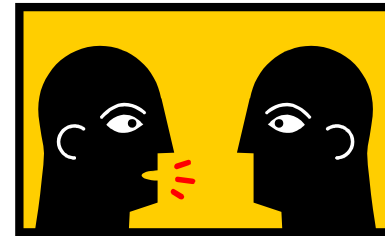
Communication is...

- Receiving information
 - Understanding information
 - Expressing information
 - Expressing feelings
 - Expressing ideas
-



What is Communication Disorder?

- Occurs in:
 - Language
 - Speech
 - Hearing





Language Difficulties

- Spoken Word
- Reading
- Writing



Problems with language involve

- Difficulty in expressing ideas coherently
 - Learning new vocabulary becomes hard
 - Following directions
 - Recalling information
 - understanding and remembering something that has just been said
 - reading at a satisfactory pace
 - learning the alphabet
 - identifying sounds that correspond to letters
-



Speech Difficulties



- **Articulation and Phonology**: Are you speaking clearly and intelligibly?
 - **Fluency**: Are you stuttering or taking long pauses? Using “ummm”?
 - **Voice**: Is your pitch too high? Too low? Consistent hoarse sound?
-

Phonological Deficits

- Frequently appear as articulation disorders
 - ❑ Child omits a consonant: “oo” for you
 - ❑ Child substitutes one consonant: “wabbit” for rabbit
 - ❑ Discrimination: child hears “go get the nail” instead of mail
-



Speech Language Disorders

- Speech disorder
 - Language disorder
 - Receptive language disorder
 - Expressive language disorder
-



Hearing Difficulties

- Includes speech problems such as articulation and/or voice
 - Includes language problems
 - Deafness
 - Hearing Loss
-



Where do Communication Disorders Come From?

- Language-based learning disabilities are the result of a difference in brain structure present at birth.





- oral-motor difficulties
(e.g., an apraxia or dysarthria of speech)
 - Speech disorder in which a person has trouble saying what he or she wants to say correctly and consistently.
- aphasias (difficulties resulting from a stroke which may involve motor, speech and/or language problems)

- Traumatic Brain Injury
- Stuttering (neurological deficit)

The most common conditions that affect a child's communication

- Language based learning disabilities
 - Attention Deficit Disorder (ADD)
 - Attention Deficit Hyperactivity Disorder (ADHD)
 - Cerebral Palsy
 - Mental Disabilities
 - Cleft Lip or Palate
 - Autism Spectrum Disorders
-



Characteristics of Children with Communication Disorder

- Difficulty with:
 - ❑ following directions
 - ❑ attending to a conversation
 - ❑ pronouncing words
 - ❑ perceiving what was said
 - ❑ expressing oneself
 - ❑ being understood
-



Language Development

- Within first month - respond to human voices
 - 3 months - turn, smile, and coo
 - 12 months - make sounds when spoken to, vary pitch and intensity, and experiment with rhythm, may say first words
 - 12-24 months - vocabularies increase to 200-300 words
-

Language Development Cont.

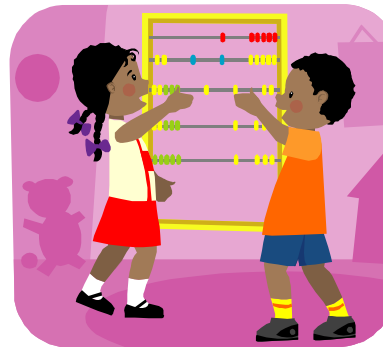
- 3 year olds - understand simple questions and prepositions (in, on, under) and follow 2-step directions, have vocabulary of 900-1,000 words
 - Preschoolers - ask W (5) and H questions and have vocabularies of 1,500-1,600 words
 - Age 6 - use irregular verbs “be,” “go”, “run” and “swim” and have vocabularies of 2,600 words
-

Ways to address communication disorders

- Speech and Language Therapy
 - Provided in school and out of school
 - Not a “cure” but possibility of improvement
 - Student learns new strategies to overcome difficulties in the classroom
-

Incidence

- 18.8% ages 6-21 get speech/language service
- 55% children ages 3-5 served under IDEA for speech/language



Relationship to Educational Outcomes

- A strong relationship exists between communication and academic achievement
 - Language and communication proficiency, along with academic success, depend on whether students can match their communication to the learning-teaching style of the classroom
-

Students with communication disorders are capable of high academic success if they learn the classroom's social, language, and learning patterns.



For More Information:

- Visit AJE at one of our two parent centers:
 - 4201 Georgia Ave NW (202) 265-1432
 - 2041 Martin Luther King, Jr. Ave SE (202) 678-8060

www.aje-dc.org
